

Growing Community Connections

Since it was founded in 1950, Mercy College has been committed to creating connections that positively impact both students and those within the neighboring communities. With campuses in Dobbs Ferry, the Bronx and Manhattan, the College remains steadfast in building relationships with organizations and leaders that can enhance the connection between the College and community.

Under the direction of Bernadette Wade CNR SAS '80, Chief Advancement Officer, the College has continued its efforts to build awareness and create connections with organizations that align with the Mercy mission. To further these efforts, the College expanded its community outreach team in fall 2021 to include two new Associate Directors of Public Relations and Community Outreach: Marques Payne '09 and Sonia Martinez.

"Mercy has always taken seriously the responsibility of being a committed community partner," said President Tim Hall. "We value the relationships we have established with the many organizations and

businesses in our region and, as our team grows, we look forward to establishing new relationships that benefit both our students and our communities."

With the support of the new team, Mercy has hit the ground running to increase connections within different sectors in the community including corporations, nonprofits, houses of worship as well as other institutions of higher education. To date, the team has worked closely with the School of

"We look forward to establishing new relationships that benefit both our students and our communities."

Health and Natural Sciences to help grow the number of clinical placement locations for Mercy's health sciences programs, helped combat the growing problem of food insecurity amongst students with donations of fresh produce to the Mav Market, partnered with admissions to explore articulation agreements with local community colleges and created opportunities to support the Don Bosco Community Center in Port Chester with after-school STEM education offerings to

drive interest in educational offerings at Mercy.

"We are proud to tell the Mercy story and expand awareness for the College within the New York region," said Wade. "During the pandemic, we have seen firsthand the positive impact of community, and we not only look forward to collaborating with partners to share mutual expertise and opportunities but to supporting one another."

In a show of community support, after the deadly apartment fire in the Bronx in January 2022, the community outreach team swiftly contacted elected officials and community leaders to ask how Mercy could help. It turned out that transportation and toiletries were needed. Within 24 hours, Mercy College had created donation bins at all Mav Market locations and had organized Mercy vans to shuttle donated goods to the hospitals and hotels where survivors were staying.

Wade added: "We want everyone to feel a connection to Mercy and look forward to exploring opportunities to make a deeper impact in the community through partnerships and collaboration."

If you're interested in learning more or partnering with Mercy, please contact Marques Payne at mpayne2@mercy.edu or Sonia Martinez at smartinez76@mercy.edu.



Photo by John Rajola

Marques Payne '09

Payne has spent the past 13 years working in community outreach and public relations for organizations such as the Bronx Chamber of Commerce and the NYC Department of City Planning. In 2018, he was honored with a Mercy College Bronx Leadership Award for Alumni Achievement.

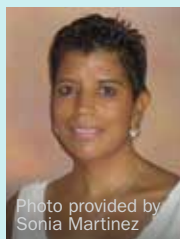


Photo provided by Sonia Martinez

Sonia Martinez

Martinez has spent the past 20+ years working in community, government and public relations for organizations such as the American Red Cross in Greater New York and the NYC Housing Authority.